



The Wirral Horn

NEWSLETTER OF THE WIRRAL TABLE TENNIS LEAGUE

Editor :- Stan Wilkinson

MARCH 1994

RAFA Cup
w/c 7.3.94 or ASAP

Phoenix 2
NBCC 4

Caldy 2
GRPCC 3

Lonsdale Cup
w/c 14.3.94 or ASAP

Caldy 1 or
GRPCC
v
Caldy 3 or
GRPCC 2

NBCC 1 or
NBCC 3
v
Civic 1

Hepple Cup
w/c 7.3.94 or ASAP
no doubles

BLTC
NBCC

Civic A
Pinewood

Bill Lowe Shield 1993/94

Round 3 w/c 14.3.94

BLTC 2 receive 4 start each game
GRPCC 4

Pwd/Civ5 To be notified
W Hosp 2

GRPCC 5 To be notified
Ph/WRUFC

Neston CC 2 receive 4 start each game
W Hosp 3

2

SEASON 1993/94 LANCASHIRE & CHESHIRE LEAGUE TABLES AS AT 22nd FEBRUARY 1994

DIV. 1	P	W	D	L	F	A	PTS
Warrington	6	5	1	0	46	14	11
Stockport	5	4	0	1	37	13	8
Liverpool	5	3	2	0	35	15	8
Preston	4	3	0	1	22	18	6
Manchester	5	2	0	3	22	28	4
Wirral	6	1	1	4	25	35	3
Mid. Cheshire	6	0	2	1	19	41	2
Blackburn	5	0	0	5	4	46	0

JNR. 2A	P	W	D	L	F	A	PTS
Barrow 'A'	5	4	1	0	39	11	9
Wirral 'A'	4	2	2	0	26	14	6
Blackpool	4	2	0	2	22	18	4
Burnley	4	1	2	1	18	22	4
S. & F'worth	3	1	0	2	19	21	2
Southport	4	0	1	3	10	30	1

DIV. 3S	P	W	D	L	F	A	PTS
Tameside	5	5	0	0	41	9	10
Glossop	6	3	1	2	34	26	7
Mid. Cheshire 'A'	5	2	3	0	34	16	7
Rochdale 'A'	6	2	1	3	26	34	5
Wirral 'A'	5	2	0	3	21	29	4
S. & F'worth 'A'	4	1	1	2	18	22	3
Lytham S.A.	5	1	1	3	17	33	3
Southport 'A'	4	0	1	3	9	31	1

JNR. 2B	P	W	D	L	F	A	PTS
Wirral	4	4	0	0	38	2	8
Wigan	3	3	0	0	24	6	6
Blackburn	3	2	0	1	19	11	4
Manchester	4	1	1	2	15	25	3
Macclesfield	5	1	0	4	19	31	2
Preston 'A'	3	1	0	2	10	20	2
Warrington	4	0	1	3	5	35	1

VETS. 5

Preston 'A'	5	5	0	0	41	9	10
Southport 'A'	5	4	0	1	38	12	8
Oldham 'C'	5	4	0	1	36	14	8
L.B.H. 'A'	4	1	0	3	18	22	2
Wirral 'B'	4	0	2	2	11	29	2
Lancs. & More 'A'	5	0	1	4	10	40	1
Wirral 'A'	4	0	1	3	6	34	1

LADIES 2

Preston	3	3	0	0	21	9	6
Wirral	3	2	0	1	21	9	4
Macclesfield	3	2	0	1	15	15	4
Blackpool	3	0	0	3	9	21	0
Glossop	2	0	0	2	4	16	0

VETS. 6

Liverpool 'A'	5	5	0	0	48	2	10
Lytham S.A.	5	4	1	0	37	13	9
St. Helens	5	2	1	2	22	28	5
Tameside	5	2	0	3	23	27	4
Warrington 'A'	6	1	2	3	23	37	4
Barrow 'A'	5	2	0	3	19	31	4
Lancs. & More 'B'	6	1	1	4	22	38	3
Oldham 'D'	5	1	1	3	16	34	3

VETS. 2

Burnley	6	5	1	0	45	15	11
Trafford	6	4	0	2	37	23	8
Bolton	5	4	0	1	35	15	8
Halton	6	3	1	2	36	24	7
L.B.H.	5	2	2	1	30	20	6
Wirral	6	1	1	4	14	46	3
Oldham 'A'	6	1	0	5	17	43	2
Trafford 'A'	6	0	1	5	16	44	1

Very many thanks to Pat and all her helpers who made the Wirral tournament such a success.

There is a rumour going around that 'hard bats' are going to be outlawed, this is certainly not going to happen in the foreseeable future - so breathe again Mary, Roy, Bob et al !

3

WIRRAL TABLE TENNIS LEAGUE TABLES

27/02/94

DIVISION 1	P	W	D	L	POINTS	DIVISION 2	P	W	D	L	POINTS
Civic 1	12	10	0	2	90	GRPCC 3	15	14	1	0	111
NBCC 1	11	11	0	0	88	Pinewood 1	13	10	1	2	92
Caldy 1	14	9	0	5	81	Civic 3	15	10	1	4	91
Alderley 1	12	6	3	3	69	Caldy 2	13	11	0	2	86
GRPCC 1	12	5	2	5	67	NBCC 4	15	6	2	7	81
NBCC 2	11	6	1	4	65	Phoenix 1	14	2	4	8	57
NBCC 3	13	3	3	7	48	Pinewood 2	14	3	3	8	56
GRPCC 2	11	4	1	6	47	Upton CC 2	15	5	2	8	54
Civic 2	12	1	1	10	31	Upton CC 1	14	3	1	10	53
Alderley 2	14	0	1	13	24	Civic 4	13	4	1	8	52
						W Spartans	15	2	0	13	47

DIVISION 3	P	W	D	L	POINTS	DIVISION 4	P	W	D	L	POINTS
Caldy 3	13	11	2	0	100	Caldy 4	12	12	0	0	103
W Hosp 1	14	9	2	3	93	Civic 5	13	11	1	1	102
Phoenix 2	14	9	2	3	91	W Hosp 3	15	10	1	4	93
W Hosp 2	12	10	1	1	82	BLTC 2	13	7	3	3	76
Neston CC 1	15	6	3	6	72	W Hosp 4	14	5	3	6	72
Pinewood 3	13	5	2	6	67	GRPCC 5	12	7	2	3	71
ESWA	15	1	3	11	55	Caldy 5	14	5	1	8	62
BLTC 1	12	6	0	6	52	Neston CC 2	13	4	1	8	57
WRUFC	13	2	2	9	45	GRPCC 6	12	3	0	9	39
NCLTC	13	2	2	9	42	GRPCC 7	13	1	0	12	23
GRPCC 4	12	1	3	8	31	BLTC 3	13	1	0	12	22

The A.G.M. OF THE Wirral Table Tennis League will be held at the League Headquarters Arrowe Park on Monday 23rd May 1994 All members are welcome to attend this meeting.

The Annual Presentation Dance will again be held at the R.A.F.A. Club Alston Rd Birkenhead on Friday June 11th. 1994, tickets will be available from Committee members.

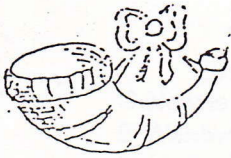
CONGRATULATIONS to our Junior team, they have reached the final of the 'Jack Livingstone Cup' Lancs & Chesh League, they will meet Barrow Juniors at a time and venue yet to be decided.

We have a pool of keen Table Tennis players building up who are not at this time affiliated to any club, We hope that we can offer them a place in teams at the beginning of next season, it is hoped that with this help clubs will be encouraged to put in an extra team, please treat this as a positive step in strengthening the league.

4
WIRRAL CLOSED TOURNAMENT FINALS

Junior boys singles	Winner	CHRIS DUNNE	Runner up	Gary Thornton-Allen
Junior Girls singles	"	CLARE NEWNS	"	Terri-Anne Nolan
Mixed doubles	"	DENISE CONROY MAL McEVOY	"	Ceri Tierney Mick Tierney
Over 40 singles	"	ROY SMITH	"	Alan Biggs
Ladies doubles	"	DENISE CONROY CLARE NEWNS	"	Sharon Norman Ceri Tierney
Mens Doubles	"	ROB BEVAN GARY WATSON	"	Mal McEvoy Phil Luxon
Ladies Singles	"	CLARE NEWNS	"	Denise Conroy
Mens singles	"	MAL McEVOY	"	Rob Bevan

Division 2 singles	Brenda Buoey	beat	Roy Williams	21/9	21/11
Division 3 singles	Ramesh Patel	beat	Eddie Moss	21/9	21/12
Division 4 singles	Steve Jones	beat	Derek Evans	21/14	19/21 31/15
Under 12 singles	Chris Dunne	beat	Terri-Anne Nolan	17/21	21/15 31/12
Cadet singles	Alice Howard	beat	Chris Dunne	21/18	15/21 21/14
Over 50 singles	Bob Hawkins	beat	Alan Biggs	21/18	21/16
Over 60 singles	Bob Hawkins	beat	Alan Biggs	23/21	21/13



The Wirral Horn

NEWSLETTER OF THE WIRRAL TABLE TENNIS LEAGUE

Editor :- Stan Wilkinson

A.G.M. 1994

CLARE WINS ENGLAND PLACE

The English schools Championship held 7th May near Coventry attracted one of the largest entries ever for all the age groups, with the event staged on 20 tables. Clare and Alice our only Wirral players as no other schools are as yet affiliated to the ESTTA came through the round robin stages unbeaten into the last 16, Clare now produced her very best form especially in the S/Final to take her into the U/16 final where she was beaten in a very close 3 sets by G Ashison. Winner and runner up are automatic selection's for the England team to play in the international tournament to be held in Ireland 2/3 July. Alice finished equal 3rd as one of the U/13 losing S/Finals, and now has to see if she is selected, congratulations Clare well done also to Alice with our best wishes that she can also follow in Clares footsteps.

We knew at our lunch stop that it was going to be a good day, with Clare pointing out that 'coaches' were only allowed by appointment at the little chef (very early this for Clare)

ENGLISH NATIONAL U/18 CHAMPIONSHIP

Clare followed up last weeks good form with a excellent display in the above event reaching the S/Final where she lost to the England Notts Marling, once again well done Clare

PARTICIPATION CENTRE

A lot of speculation and rumour re the above project are at present ill informed and widely of target.

At present Wirral T.T.L committee have submitted a draft application to three bodies sports council, Wirral borough council, ETTA within the Focus on sport programme, our application is for a 12 court premises inclusive of changing/showers/meeting/lounge rooms and all equipment. Wirral already has the backing of the ETTA and we are now at the stage of opening the door and presenting a case for Wirral having its own centre, as of now we have been very well recieved and are very hopeful, but there is a long way to go.

2

WIRRAL TABLE TENNIS LEAGUE TABLES

16/05/94

DIVISION 1	P	W	D	L	POINTS
NBCC 1	18	18	0	0	146
Civic 1	18	16	0	2	145
NBCC 2	18	10	1	7	107
Caldy 1	18	10	1	7	95
GRPCC 1	18	8	2	8	93
Alderley 1	18	7	4	7	90
GRPCC 2	18	6	3	9	78
NBCC 3	18	5	3	10	68
Civic 2	18	1	1	16	44
Alderley 2	18	1	1	16	34

DIVISION 2	P	W	D	L	POINTS
GRPCC 3	20	19	1	0	157
Pinewood 1	20	14	2	4	135
Caldy 2	20	15	2	3	130
Civic 3	20	11	3	6	113
NBCC 4	20	8	3	9	107
Upton CC 1	20	6	2	12	89
Phoenix 1	20	3	6	11	83
Civic 4	20	5	3	12	74
W Spartans	20	4	2	14	72
Upton CC 2	20	6	3	11	70
Pinewood 2	20	4	3	13	70

DIVISION 3	P	W	D	L	POINTS
Caldy 3	20	18	2	0	155
W Hosp 2	20	14	3	3	129
Phoenix 2	20	13	3	4	128
W Hosp 1	20	13	3	4	127
Neston CC 1	20	9	4	7	107
Pinewood 3	20	9	3	8	107
BLTC 1	20	8	1	11	86
NCLTC	20	5	3	12	78
WRUFC	20	2	4	14	68
ESWA	20	1	4	15	67
GRPCC 4	20	1	4	15	48

DIVISION 4	P	W	D	L	POINTS
Caldy 4	20	20	0	0	174
Civic 5	20	16	2	2	156
BLTC 2	20	11	5	4	124
W Hosp 3	20	12	2	6	118
GRPCC 5	20	11	2	7	111
W Hosp 4	20	9	4	7	110
Neston CC 2	20	8	1	11	96
Caldy 5	20	5	1	14	64
GRPCC 6	20	5	0	15	63
BLTC 3	20	3	1	16	53
GRPCC 7	20	1	0	19	31

Division 1 Averages 1993-94 3

<u>Player</u>	<u>Won</u>	<u>Lost</u>	<u>Average</u>	<u>Club</u>
C Newns	6	0	100.00%	GRPCC 1
B Wentworth	23	1	95.83%	Alderley 1
M McEvoy	31	2	93.94%	NBCC 1
R Bevan	28	2	93.33%	NBCC 1
A Taylor	43	5	89.58%	NBCC 2
R Smith	41	7	85.42%	Civic 1
G Watson	37	8	82.22%	Civic 1
M Tierney	42	12	77.78%	Civic 1
A Evans	14	4	77.78%	NBCC 1
V Franco	9	3	75.00%	Civic 1
P Luxon	20	7	74.07%	NBCC 1
M Newns	13	5	72.22%	GRPCC 1
D Appleton	21	9	70.00%	GRPCC 1
N Fagan	32	16	66.67%	Caldy 1
J Hardy	26	13	66.67%	NBCC 2
A Biggs	22	11	66.67%	NBCC 3
R Hawkins	6	3	66.67%	GRPCC 1
N Roberts	11	7	61.11%	Alderley 1
A Barbat	16	11	59.26%	NBCC 1
P Roberts	24	18	57.14%	Alderley 1
G Allen	30	24	55.56%	GRPCC 2
C Newns	27	24	52.94%	GRPCC 2
G Exell	25	23	52.08%	Caldy 1
J Cooper	22	23	48.89%	Caldy 1
S Norman	19	20	48.72%	GRPCC 1
N Eymond	5	7	41.67%	Caldy 1
R Barker	21	30	41.18%	NBCC 2
J Appleton	16	23	41.03%	GRPCC 1
G Tierney	11	16	40.74%	NBCC 3
R Jones	21	33	38.89%	NBCC 3
J Briggs	17	31	35.42%	Alderley 1
J Clewett	18	35	33.96%	Civic 2
K Gillison	4	8	33.33%	GRPCC 1
J Doyle	5	12	29.41%	Civic 2
A McCready	11	31	26.19%	Alderley 2
A Lloyd	6	18	25.00%	NBCC 2
A Weldon	9	36	20.00%	Alderley 2
C Tierney	10	41	19.61%	GRPCC 2
W Stanley	9	41	18.00%	Civic 2
P R/Clayton	6	33	15.38%	Alderley 2
D Blair	6	36	14.29%	NBCC 3
H Sanderson	2	19	9.52%	Alderley 2

4

Division 2 Averages 1993-94

<u>Player</u>	<u>Won</u>	<u>Lost</u>	<u>Average</u>	<u>Club</u>
T Barraclough	40	2	95.24%	NBCC 4
B Buoeoy	31	2	93.94%	GRPCC 3
R Hawkins	46	4	92.00%	GRPCC 3
K Strahan	43	8	84.31%	Pinewood 1
V Franco	31	8	79.49%	Civic 3
C Dunne	29	9	76.32%	GRPCC 3
P Deeks	20	7	74.07%	Caldy 2
B Carter	39	15	72.22%	Pinewood 1
A Page	18	8	69.23%	Caldy 2
J Reynolds	30	15	66.67%	Pinewood 1
D Parr	6	3	66.67%	Civic 4
M Miles	33	17	66.00%	W Spartans
P Mutch	28	16	63.64%	Civic 3
J Sherratt	34	20	62.96%	Phoenix 1
J Hodges	17	10	62.96%	Upton CC 1
N Eymond	30	18	62.50%	Caldy 2
J Horrobin	27	18	60.00%	Caldy 2
A Howard	22	16	57.69%	GRPCC 3
P S Walsh	32	25	56.14%	Civic 4
A Willett	26	23	51.35%	Upton CC 2
P Evans	23	22	51.11%	NBCC 4
R Williams	29	31	48.33%	Upton CC 1
J Doyle	20	24	45.45%	Civic 3
A Lampkin	23	28	45.10%	Upton CC 2
A Costain	23	28	45.10%	NBCC 4
J Fowler	4	5	44.44%	Upton CC 1
R King	18	26	40.91%	Civic 3
F Sorrentino	20	29	40.82%	Civic 4
A Dakin	21	30	36.84%	Pinewood 2
M Ashton	21	30	36.84%	Phoenix 1
D Morris	12	21	36.36%	Upton CC 2
D Benson	18	33	35.29%	Pinewood 2
P Faulkner	19	35	35.19%	W Spartans
P Wright	20	37	35.09%	Pinewood 2
A Irwin	18	35	33.96%	Upton CC 1
J Conway	14	28	33.33%	NBCC 4
D Chalkley	5	10	33.33%	Phoenix 1
D Cardwell	7	17	29.17%	Upton CC 1
R Rawlinson	10	29	25.64%	Phoenix 1
E McGiveron	3	9	25.00%	Phoenix 1
S Sorrentino	7	50	12.28%	Civic 4
F Clemett	5	39	11.36%	W Spartans
G Hockaday	2	19	9.52%	Upton CC 2
D Green	2	19	9.52%	Upton CC 2
D Cain	2	27	6.90%	W Spartans

5

Division 3 Averages 1993-94

<u>Player</u>	<u>Won</u>	<u>Lost</u>	<u>Average</u>	<u>Team</u>
A Page	9	0	100.00%	Caldy 3
D South	42	3	93.33%	W Hosp 2
P Loftus	11	1	91.67%	Caldy 3
J Murphy	8	1	88.89%	W Hosp 2
D South	8	1	88.89%	W Hosp 1
M Battersby	44	7	86.27%	Caldy 3
S Grayson	25	5	83.33%	Neston CC 1
H Owen	10	2	83.33%	Pinewood 3
D Jones	5	1	83.33%	Caldy 3
K Smith	24	6	80.00%	Caldy 3
C Butters	12	3	80.00%	GRPCC 4
P Sergeant	18	6	75.00%	Caldy 3
J Barrow	42	15	73.68%	W Hosp 1
T Johnson	15	6	71.43%	WRUFC
R Patel	32	13	71.11%	Phoenix 2
D Foulis	25	11	69.44%	ESWA
B Halliday	4	2	66.67%	WRUFC
E Moss	37	20	64.91%	Phoenix 2
T Connor	35	19	64.81%	Phoenix 2
T Dunn	33	18	64.71%	W Hosp 1
J Murphy	30	18	62.50%	W Hosp 1
P Jenner	32	21	60.38%	BLTC 1
B Rhodes	27	18	60.00%	W Hosp 2
S Wilkinson	34	23	59.65%	Pinewood 3
M Robinson	24	18	57.14%	NCLTC
D Rennison	23	21	52.27%	Neston CC 1
P Chandler	18	18	50.00%	NCLTC
E McGiveron	12	12	50.00%	Phoenix 2
G Challinor	16	17	48.48%	NCLTC
R West	26	28	48.15%	Pinewood 3
S Jones	7	8	46.67%	BLTC 1
K Wells	12	14	46.15%	Neston CC 1
K Grein	26	31	45.61%	ESWA
W Gibbins	24	30	44.44%	W Hosp 2
I Free	13	17	43.33%	Caldy 3
T Reuben	13	17	43.33%	Neston CC 1
P Chadwick	20	27	42.55%	BLTC 1
F Hepple	18	30	37.50%	Pinewood 3
G Pentland	10	17	37.04%	GRPCC 4
B Fuller	14	25	35.90%	WRUFC
R Boyle	13	25	34.21%	Neston CC 1
G Ferguson	12	30	28.57%	GRPCC 4
M Muskett	5	13	27.78%	NCLTC
C Lowe	3	8	27.27%	BLTC 1
B Tyerman	3	9	25.00%	NCLTC
I Hale	13	41	24.07%	WRUFC
K Cross	8	34	19.05%	WRUFC
B Hadfield	6	36	14.29%	ESWA
G Charles	3	18	14.29%	NCLTC
C Freeman	2	16	11.11%	NCLTC
K Jones	3	30	9.09%	ESWA
P Talbot	1	11	8.33%	BLTC 1
T Smith	3	45	6.25%	GRPCC 4

6

Division 4 Averages 1993-94

<u>Player</u>	<u>Won</u>	<u>Lost</u>	<u>Average</u>	<u>Team</u>
M Travis	6	0	100.00%	Caldy 5
D Jones	43	2	95.56%	Caldy 4
C McCombe	17	1	94.44%	Caldy 4
I Owen	39	6	86.67%	Caldy 4
D Evans	40	8	83.33%	Civic 5
P Loftus	10	2	83.33%	Caldy 4
W Fletcher	5	1	83.33%	W Hosp 4
S McCloughlin	41	10	80.39%	Civic 5
S Shah	28	8	77.78%	GRPCC 5
C Mudgal	14	4	77.78%	W Hosp 4
N Burdett	39	14	73.58%	W Hosp 3
S Jones	44	16	73.33%	BLTC 2
J Harris	13	5	72.22%	GRPCC 5
P Talbot	33	15	68.75%	BLTC 2
M Travis	26	13	66.67%	Caldy 4
K Naylor	25	14	64.10%	Neston CC 2
C Lowe	22	14	61.11%	BLTC 3
J Gibbins	34	22	60.71%	W Hosp 3
V Howard	25	17	59.52%	BLTC 2
T/A Nolan	16	11	59.26%	GRPCC 6
J Powell	28	20	58.33%	Caldy 5
R Millet	28	20	58.33%	Civic 5
G Nield	14	10	58.33%	Neston CC 2
J Rathbone	33	24	57.89%	W Hosp 4
A Bird	18	15	54.55%	GRPCC 7
C Lowe	6	6	50.00%	BLTC 2
R Humphries	28	29	49.12%	W Hosp 4
N Patel	16	17	48.48%	GRPCC 5
I Cuthbert	27	29	48.21%	W Hosp 3
R Spence	12	15	44.44%	Neston CC 2
R Nolan	12	15	44.44%	GRPCC 6
C Ashton	17	22	43.59%	GRPCC 5
B Hall	10	23	30.30%	Neston CC 2
W Herzog	9	21	30.00%	Neston CC 2
S Howard	16	44	26.67%	BLTC 3
D Tobin	4	11	26.67%	Caldy 5
M Thomas	13	41	24.07%	Caldy 5
G Lloyd	5	16	23.81%	GRPCC 6
B Knott	6	36	14.29%	BLTC 3
J Trenbirth	3	33	8.33%	GRPCC 7
A Beesley	2	22	8.33%	BLTC 3
R Williams	3	39	7.14%	Caldy 5
M Nolan	2	31	6.06%	GRPCC 6
M Barker	1	32	3.03%	GRPCC 7
M Hanlon	0	30	0.00%	GRPCC 7

8

<u>VETS. 3</u>	<u>P</u>	<u>W</u>	<u>D</u>	<u>L</u>	<u>F</u>	<u>A</u>	<u>PTS</u>
Blackburn	7	7	0	0	60	10	14
Blackpool	7	5	1	1	37	33	11
Southport	7	3	3	1	35	35	9
S. & F'worth	7	3	1	3	34	36	7
Nelson	7	3	1	3	30	40	7
Halton 'A'	7	2	0	5	30	40	4
Rochdale 'A'	7	1	0	6	28	42	2
Oldham 'B'	7	1	0	6	26	44	2

<u>VETS. 4</u>	<u>P</u>	<u>W</u>	<u>D</u>	<u>L</u>	<u>F</u>	<u>A</u>	<u>PTS</u>
Lancs. & More	8	6	2	0	55	25	14
Hyndburn	8	5	2	1	54	26	12
Mid. Cheshire	8	5	1	2	46	34	11
S. & F'worth 'A'	8	4	0	4	41	39	8
Rochdale 'B'	8	3	0	5	36	44	6
Wigan	8	3	0	5	31	49	6
Manchester 'A'	8	3	0	5	31	49	6
Barrow	8	2	1	5	30	50	5
Wigan 'A'	8	2	0	6	36	44	4

<u>VETS. 5</u>	<u>P</u>	<u>W</u>	<u>D</u>	<u>L</u>	<u>F</u>	<u>A</u>	<u>PTS</u>
Preston 'A'	6	6	0	0	51	9	12
Southport 'A'	6	5	0	1	45	15	10
Oldham 'C'	6	4	0	2	39	21	8
Wirral 'A'	6	1	2	3	17	43	4
L.B.H. 'A'	6	1	1	4	24	36	3
Wirral 'B'	6	0	2	4	12	48	2
Lancs. & More 'A'	6	0	1	5	14	46	1

<u>VETS. 6</u>	<u>P</u>	<u>W</u>	<u>D</u>	<u>L</u>	<u>F</u>	<u>A</u>	<u>PTS</u>
Liverpool 'A'	7	7	0	0	67	3	14
Lytham S.A.	7	5	1	1	44	26	11
Tameside	7	4	0	3	36	34	8
Barrow 'A'	7	3	1	3	31	39	7
St. Helens	7	2	1	4	27	43	5
Warrington 'A'	7	1	2	4	26	44	4
Oldham 'D'	7	1	2	4	24	46	4
Lancs. & More 'B'	7	1	1	5	25	45	3

PRESENTATION DANCE

To be held at the R.A.F.A. Club Alston Rd on JUNE 17th. 1994, please note change of date, There will be a Buffet Supper provided, tickets from Mike Ashton or committee members.

LONSDALE CUP Won by N.B.C.C. from G.R.P.C.C.

R.A.F.A. CUP Won by G.R.P.C.C. 3 from N.B.C.C. 4

BILL LOWE SHIELD Won by B.L.T.C. 2 from G.R.P.C.C. 5